



Organizing productive excellence



Our History



OLSOM
Merging Technologies

- **2009** – company founded as a System Integrator of MES solutions for Automotive industry
- **2010** – birth of AGW IP product – integration platform for robust real time complex systems
- **2010** – birth of AGW MES product – MES software for discrete manufacturing
- **2012** – birth of AGW WMS product – Warehouse Management System for manufacturing and logistics facilities
- **2013 – 2014** – extension of OLSOM services to Food Processing, Chemicals and Raw Materials industries
- **2015** – birth of AGW Production Management – software focused on performance visualization and production metrics
- **2015 – 2016** – extension of OLSOM services to Aerospace industry and Automotive OEM's
- **2017 – 2019** – accent on instant visualization of manufacturing KPI's, global enterprise KPI's
- **2018** – foundation of OLSOM affiliate in Poland
- **2020 – 2021** – redesign of AGW WMS module, extension to HVAC and Electronics assembly



OLSOM has roots in Manufacturing
IT and MES/WMS solutions
since 1998



Offices in Poland, Ukraine and UK



Customers around the globe

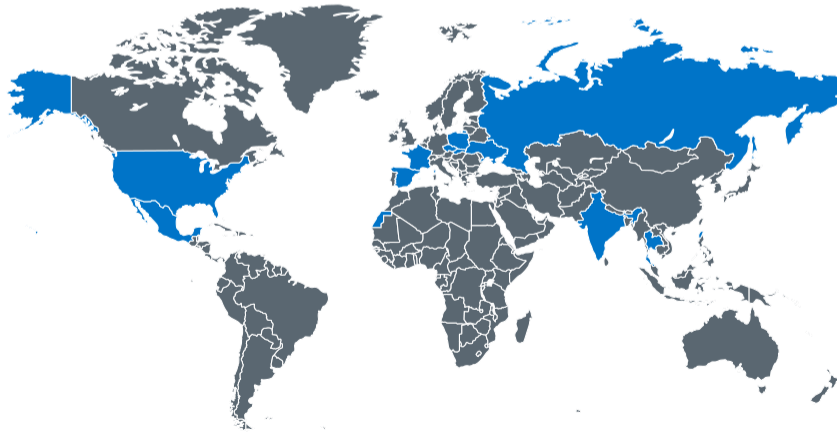
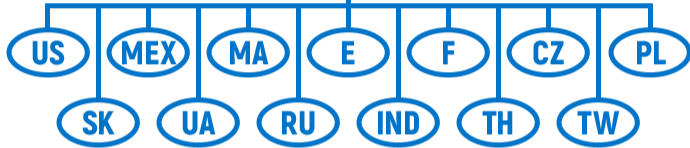


Partner ecosystem

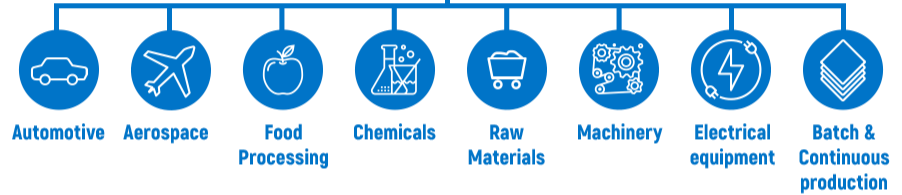




Geography



Industries



Some Numbers



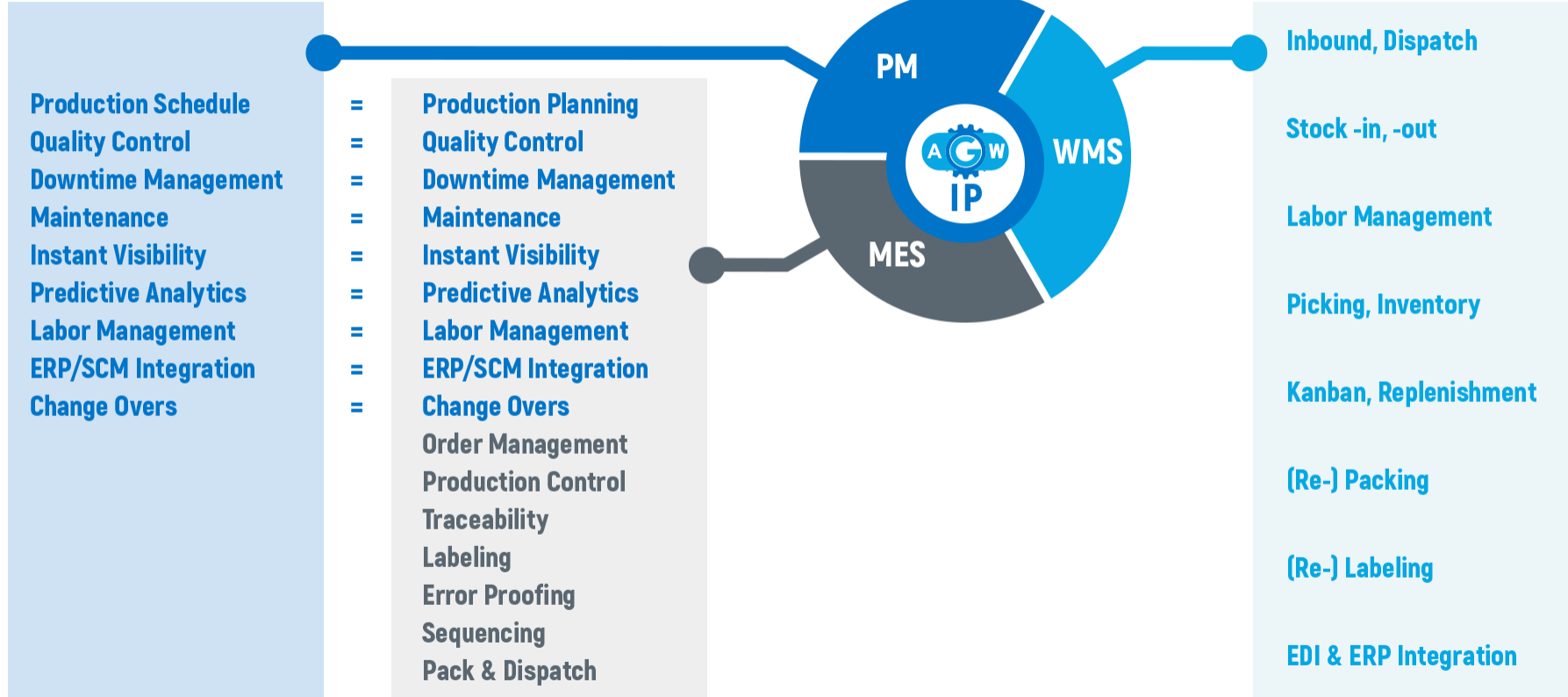
OLSOM
Merging Technologies

- Team of 40+ highly skilled professionals
- R&D department
- Service Delivery department
- More than a decade of continues development and implementation of product suite for manufacturing IT
- Product implemented at 50+ manufacturing facilities around the globe
- Direct personalized 24/7 support of 30+ factories around the globe
- 120+ production lines and cells running with our products
- Serve businesses of various industries and scales
- Our clients vary from SME of 50 employees through global corporates with dozens of thousands employees



Our software covers:

- **Production Management** – everything you can imagine is needed for let's say "plastics production":
 - Injection molding machines and their maintenance, changeover control and process validations
 - Counting parts produced, scrapped, suspected, gathering all kind of KPI's
- **Assembly process management**
 - Poka-Yoke, Interlocking and a lot of fancy stuff that prevents Error Propagation increasing the Quality of production
 - Pick-to-light, build-to-order, process validation, testing, printing of different labels for product and for logistic
 - Traceability as is required by multiple standards in Automotive industry
 - Engineering changes, materials, BOM, and .. too long list of functions
- **Visualization**
 - Dedicated design on station level (that had a few generations – adopting to the Operator' needs)
 - About 30 of different reports for office/production management
 - Dashboards of different kind: per station, per work center, per Area, Facility and
 - Up-to the corporate level, where you can see the world map with facilities on it, with ability to drill-down to the shop floor level – analyzing the most impactful downtime reasons and scrap reasons



VAI / AGW Platform



OLSOM
Merging Technologies

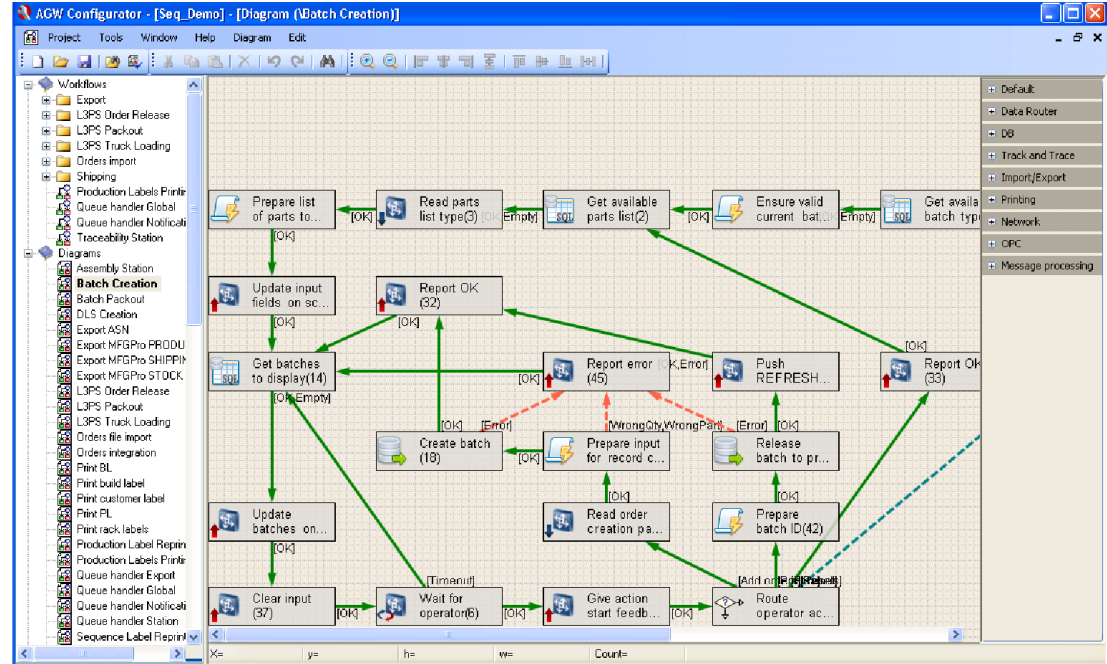
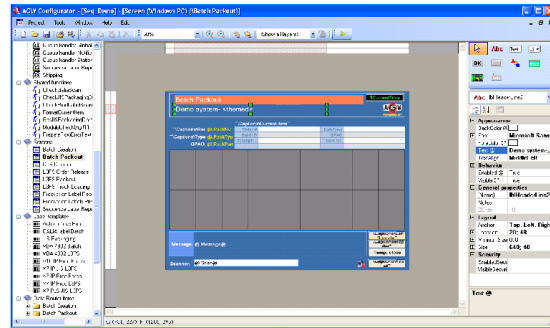
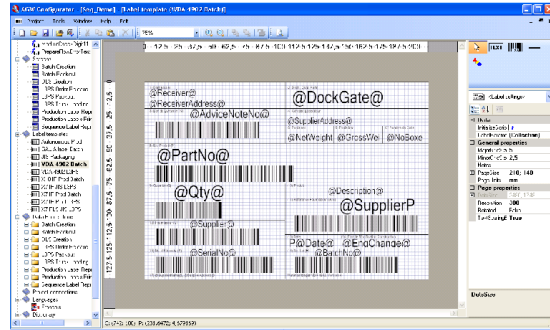
VAI / AGW IP – a flexible and highly-performant real-time integration platform. AGW IP is the core technology of the OLSOM software package. It addresses the challenges of IIOT and BPM business processes.



Low Code Platform for Manufacturing IT



OLSON
Merging Technologies





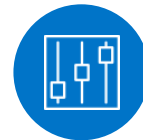
Data Exchange

AGW IP exposes a rich library of interfaces for communication with plant floor equipment, databases, ERP systems, and other manufacturing applications. Connect torque guns or any other plant floor equipment in a few clicks. The AGW IP technology allows flexible data processing and dynamic process scripting. This enables you to process, send, and store production data the way you need.



Label Printing

Design and print your production, quantity, and container labels with an embedded WYSIWYG label designer.



HUMAN-MACHINE INTERFACE (HMI)

AGW IP offers a WYSIWYG HMI designer for your operator and equipment screens. Flexible AGW screens are compatible with desktop and mobile.



Workflow Execution

AGW IP introduces two core technologies: AGW Diagram and AGW Workflow. While AGW Diagram represents the process scenario, AGW Workflow invokes the instance of AGW Diagram with the equipment-specific parameters. This design allows you to reuse the same process script (AGW Diagram) for multiple plant floor stations and build sophisticated yet exceedingly efficient solutions.



Flexibility

AGW IP is a truly flexible solution due to its modular core and dynamic workflows. This enables a broad audience of system integrators to modify and customize AGW solutions to meet customer requirements. AGW IP platform implements Microsoft Jscript scripting, which extends AGW solutions flexibility even more.

Support For Multiple Ui Languages

AGW IP provides full support of the UI localization. Save your HMI messages in different languages and switch between them in a single click anytime you need.

Scalability

Whether you need a single-PC solution, multi-server network, or a cloud-based system, AGW IP core allows scaling your software solution to a needed extent. AGW software products address the issue of performance, load balancing, availability, and many other metrics.

Change Management

AGW IP exposes a version management functionality. It enables you to monitor changes, compare configuration revisions, and rollback updates.



PLC's

AB ControlLogix
Siemens S7
Schneider/Modicon/Telemecanique
Mitsubishi
Opto22

Remote I/O

Advantech
Moxa

Interfaces

OPC
Modbus
Ethernet/IP
Simatic
TCP/IP
Web Services, REST
Open Protocol





Equipment

- Injection Molding Machines
- Vibration Welding Machines
- Ultrasonic Welding Machines
- Foaming Machines
- Milling Machines
- Laser Scoring Machines
- Vision Systems
- Various Testing Equipment
- Conveyers
- RFID Systems
- Pick-to-Light Systems
- Torque Controllers
- Weight Scales
- Robots
- Automated Guided Vehicle (AGV) Systems
- Automated Storage and Retrieval Systems (ASRS)





Output

Web browsers:

IE 11 and higher,
Google Chrome,
Firefox,
Safari,
Opera,
etc.

Mobile terminals

Integration with PLC HMI's
Integration with 3rd party
HMI software
(Iconics, GE Simplicity, etc.)
Stack light, horn, etc.

Input

Hand held scanners

Fixed scanners
RFID readers
Touch panels
Buttons

3:21:07 AM
12/19/2017

Hyundai Engine - Eng1
User: Rodriguez Wright

Pallet Type: 2i-GDI (NLF) (10007)
LP ID (DTA): E1BO_50_0149
OP ID (NDTA): E1BO_41_0045

Pallet SN: E1BO_51_0019
Quantity: 27/27
Part Type: 2i-GDI (NLF)

OK

AGW
Please, input pallet ID to open info.
English Reset/Cancel
Korean Sign-out



X6Z ASS LINE
DAG HARMONIE CTF - D63210930
19.12.2017 10:46
Shift 1
Operators[1]

OFF

95

3 Operators

Production: 182
Current part produced: 119
Scheduled: 0
Scrap: 0 (0.00%)
Current part scrapped: 0 (0.00%)

Time: 05:00 06:00 07:00 08:00 09:00 10:00 11:00 12:00 13:00
Schedule Production Actual Scrap

3:18:27 AM
12/19/2017

User: A-Crew
Sign-out

PALLET CONTENT MANAGEMENT
Korean English

Pallet SN	E1HC_51_0019	Location	L2	Status	Closed	Pallet Created	Dec 18 2017 10:25PM
Part Type	2i-GDI	Quantity	34/38	Model	Heads	Pallet Closed	Dec 18 2017 11:17PM

Blocks				Heads				Cranks			
Serial NO	S	Qty	PTYPE	Serial NO	S	Qty	PTYPE	Serial NO	S	Qty	PTYPE
E1BO_51_0056	C	1027	2i-GDI	E1HO_51_0021	C	36/38	2-6E1	E1CO_51_0017	C	36/38	TRDAS
E1BO_51_0055	C	27/27	2i-GDI	E1HO_51_0022	C	36/38	2-6E1	E1CO_51_0016	C	47/50	TRDAS
E1BO_51_0054	C	27/27	2i-GDI	E1HO_51_0021	C	36/38	2-6E1	E1CO_51_0015	C	1/50	2i-GDI
E1BO_51_0053	C	27/27	2i-GDI	E1HO_51_0019	C	34/38	2-6E1	E1CO_51_0014	C	1/50	TRDAS
E1BO_51_0052	C	27/27	2i-GDI	E1HO_51_0018	C	36/38	2-6E1	E1CO_51_0013	C	1/50	TRDAS
E1BO_51_0051	C	27/27	2i-GDI	E1HO_51_0017	C	36/38	2-6E1	E1CO_51_0012	C	1/50	TRDAS
E1BO_51_0050	C	27/27	2i-GDI	E1HO_51_0016	C	36/38	2-6E1	E1CO_51_0011	C	4/50	2i-GDI

Scanner: Report Add Remove Reset
Pallet E1HC_51_0019 is shown. Close Part mode Set status Choose

Example Screen (Packaging)



OLSOM
Merging Technologies

Product

Traffic Control

Counters

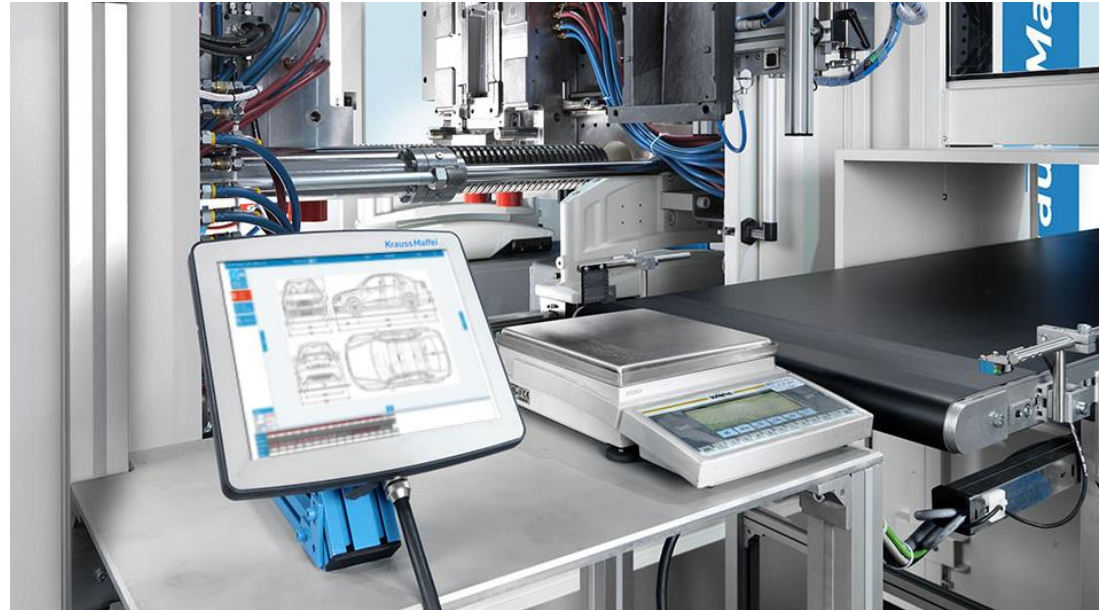
English		K0 HDLP		02-Oct-20																																																			
Polish		OP29 Final audit and packaging		12:25:03 PM		POWERED BY																																																	
Produkt: <input type="text" value="K0 HDLP Citroen HAL"/>		Operator: <input type="text" value="Kronda Vladimir"/>		Logowanie																																																			
Część: <input type="text" value="00197076-05 - K0 HL CIT HAL EU L OEM"/>		Zasada pakowania: <input type="text" value="K0 HDLP CIT HAL 4x4 - K0 Custom"/>		Edytuj																																																			
Serial: 00197076052810190004 Version: 00197076-05		Handling Unit Serial: K0_HDLP_HU29092000001 BOX Serial: K0_HDLP_BOX021020001		Last packed SN: 00197076051105200343 Customer SN: 0019707605980856778000A00C8I022909201718130010 Version: 00197076-05																																																			
<table border="1"><thead><tr><th>Station</th><th>Result</th></tr></thead><tbody><tr><td>OP21 Assembly of gimp, nut to housing</td><td>Pass</td></tr><tr><td>OP22 Screwing pivot & high voltage cable to h...</td><td>Pass</td></tr><tr><td>OP24 Pressing reflector & projector, bulbs DRL...</td><td>Pass</td></tr><tr><td>OP25 Screwing T1 & screwing balast</td><td>Pass</td></tr><tr><td>OP26 Plasma + Glueing</td><td>Pass</td></tr><tr><td>OP27 EOL + Leak test</td><td>Pass</td></tr><tr><td>OP28 Ventings assembly</td><td>Pass</td></tr></tbody></table>		Station	Result	OP21 Assembly of gimp, nut to housing	Pass	OP22 Screwing pivot & high voltage cable to h...	Pass	OP24 Pressing reflector & projector, bulbs DRL...	Pass	OP25 Screwing T1 & screwing balast	Pass	OP26 Plasma + Glueing	Pass	OP27 EOL + Leak test	Pass	OP28 Ventings assembly	Pass	<table border="1"><thead><tr><th>1</th><th>2</th><th>3</th><th>4</th></tr></thead><tbody><tr><td>00197076051105200368</td><td>00207219032605200305</td><td>00207219032605200247</td><td>00207219032605200241</td></tr><tr><th>5</th><th>6</th><th>7</th><th>8</th></tr><tr><td>00207219032605200220</td><td>00207219032605200202</td><td>00207219032605200186</td><td>00207219032605200174</td></tr><tr><th>9</th><th>10</th><th>11</th><th>12</th></tr><tr><td>00197076052104200168</td><td>00207219032605200255</td><td>00197076051105200352</td><td>00197076051105200343</td></tr><tr><th>13</th><th>14</th><th>15</th><th>16</th></tr><tr><td>00197076052810190004</td><td></td><td></td><td></td></tr></tbody></table>		1	2	3	4	00197076051105200368	00207219032605200305	00207219032605200247	00207219032605200241	5	6	7	8	00207219032605200220	00207219032605200202	00207219032605200186	00207219032605200174	9	10	11	12	00197076052104200168	00207219032605200255	00197076051105200352	00197076051105200343	13	14	15	16	00197076052810190004				PASSED			
Station	Result																																																						
OP21 Assembly of gimp, nut to housing	Pass																																																						
OP22 Screwing pivot & high voltage cable to h...	Pass																																																						
OP24 Pressing reflector & projector, bulbs DRL...	Pass																																																						
OP25 Screwing T1 & screwing balast	Pass																																																						
OP26 Plasma + Glueing	Pass																																																						
OP27 EOL + Leak test	Pass																																																						
OP28 Ventings assembly	Pass																																																						
1	2	3	4																																																				
00197076051105200368	00207219032605200305	00207219032605200247	00207219032605200241																																																				
5	6	7	8																																																				
00207219032605200220	00207219032605200202	00207219032605200186	00207219032605200174																																																				
9	10	11	12																																																				
00197076052104200168	00207219032605200255	00197076051105200352	00197076051105200343																																																				
13	14	15	16																																																				
00197076052810190004																																																							
Wyczyść liczniki																																																							
OK 122348		NOK 0																																																					
<input type="button" value="Dodruk"/>	<input type="button" value="Odłożenie na bok"/>	<input type="button" value="Wysyłka nie pełna"/>	<input type="button" value="Wyślij ponownie do SAP"/>	<input type="button" value="Pomiń SAP"/>	<input type="button" value="OK"/>	<input type="button" value="NOK"/>	<input type="button" value="Wypakuj paletę"/>	<input type="button" value="Wypakuj box"/>	<input type="button" value="Wypakuj lampę"/>																																														
Skaner: <input type="text"/>		Zeskanuj barcode z lampy, którą chcesz pakować.				RESET																																																	



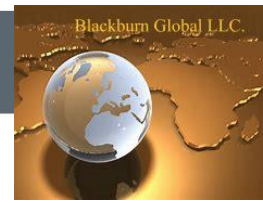
OLSOM offers an out-of-the-bot software for production control and visualization. Here are the edges of our ready-made software solution:

- Intuitive manufacturing KPI visualization;
- KPI analysis;
- Highly integratable modular core.

AGW PM is the perfect solution for businesses seeking explicit KPI visualization without other MES features.



VAI / AGW Production Management Station



OLSOM
Merging Technologies

AGW **ASSY 1 - Ned 1000**

6/26/2020 12:40 PM 1st 🌐 👤 1

Production

Current: 4215 Pcs
Part per shift 281 | 281 | 2248 | 1405

Total: 4215 Pcs
Per shift

Good: 4212 Pcs
Per shift

[CHANGEOVER](#) [HISTORY](#)

90%

Schedule

Qty: 7500
Scheduled for shift

Fulfilment: 56% | 65.00

Cycle time: 70

[CYCLE TIME](#) [SCHEDULE](#)

98%
A

91%
P

99%
Q

Scrap

Rate: 0.07%
Per shift

Qty: 3 Pcs
Current part per shift

Total: 3 Pcs
Parts per shift

[DECLARE](#) [HISTORY](#)

Downtime

Duration: 0 : 0
Per shift

Quantity: 1 Time
Per shift

Average: 3.88
Duration per shift

[START](#) [HISTORY](#)

80%

88%
A

96%
P

94%
Q

Time	7:00 AM	8:00 AM	9:00 AM	10:00 AM	11:00 AM	12:00 PM	1:00 PM	2:00 PM
Schedule						1440	3600	3600
Production								
Actual	48 148 1384 1240	48 148 1384 1240	49 149 1392 1245	52 152 1416 1260	51 151 1408 1255	33 133 1264 1165		
Scrap	1			1		1		

AGW **ASSY 1** **Combo...**

🌐 👤 1

88%
A

96%
P

94%
Q



Runs in web browsers



Optimized for touch panels



Multilingual



Real-time Visibility

Monitor your factory processes in real-time. View the critical production indicators on AGW OEE Dashboards. Receive instant alerts on manufacturing issues via email or paging messaging systems along with dashboard notifications.

Web-based Solution

AGW OEE is compatible with on-premises servers and cloud hosting. Select a suitable platform and access AGW OEE via modern web browsers.

Reporting System

AGW OEE exposes a broad range of customizable reports. You can order custom AGW report development from our system integration specialists or set up your reports with AGW Report Designer.

Flexibility

Here at OLSOM, we understand how crucial solution customization is. This is why we made AGW OEE core configurable. Customize object properties and names, change UI layout, and perform many other changes without touching the code. Integrate AGW OEE with other MES modules to build a holistic manufacturing ecosystem.

Built-in Software Interfaces

With AGW OEE interfaces, you can establish a robust communication between MES and your plant floor equipment, ERP systems, quality systems, and other manufacturing applications and technologies.



Personnel Management

Monitor your employee activity and make sure they are qualified to work on your equipment.



Production Scheduling

Plan your production in advance. Schedule specific products to be produced on the specific manufacturing equipment on your assembly lines.



Production Metrics

Improve your manufacturing KPIs with AGW OEE. Our solution provides both runtime visibility and historical production data.



Defect Analysis

Increase your quality metrics by discovering and eliminating the most common defect causes.



Downtime Analysis

Reduce your unplanned downtime duration by discovering and eliminating the most common downtime causes.



Maintenance Management

Organize your maintenance and alert your employees about upcoming maintenance. Isolate the maintenance-related items (technical jobs and etalons) from regular production.



Tooling

Implement the checklist functionality to study the equipment setup and to gather statistics on OK/NOK settings.



Documentation Management

Put your operator guidelines and training on track with AGW OEE. OLSOM software enables you to manage your equipment and process documentation.

Real-time Visibility



OLSOM
Merging Technologies



Available anywhere



Data mobility



Plant dashboards



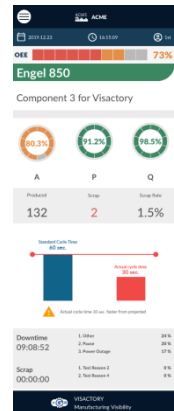
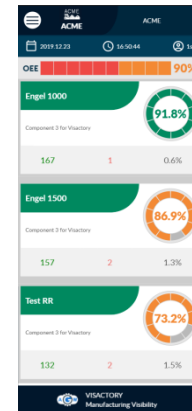
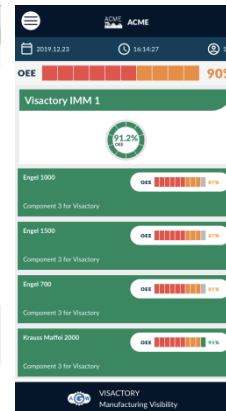
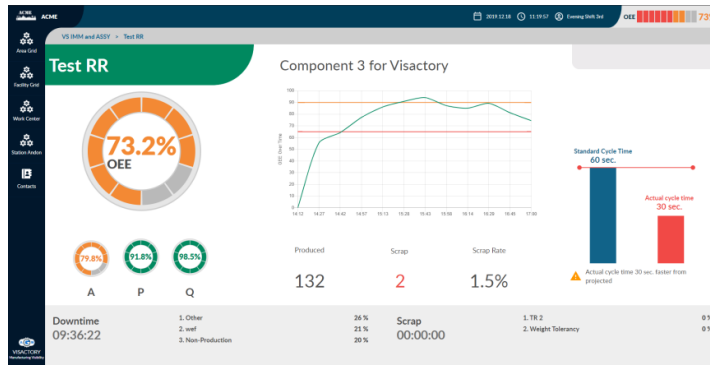
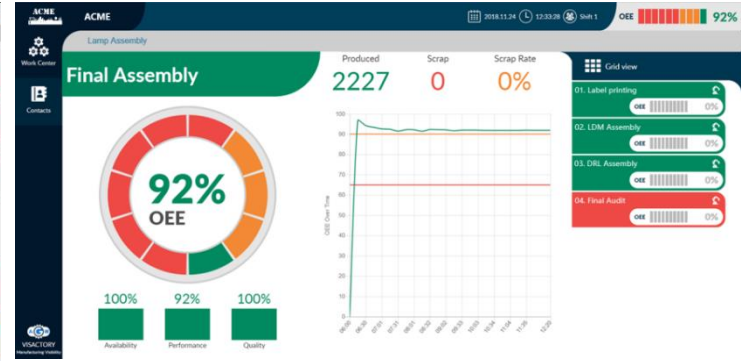
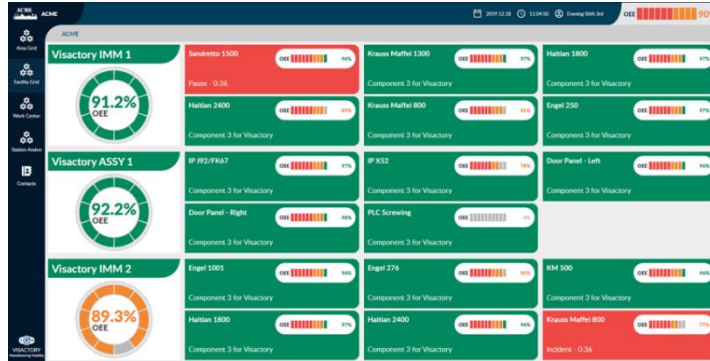
Management visibility



Connection with enterprise



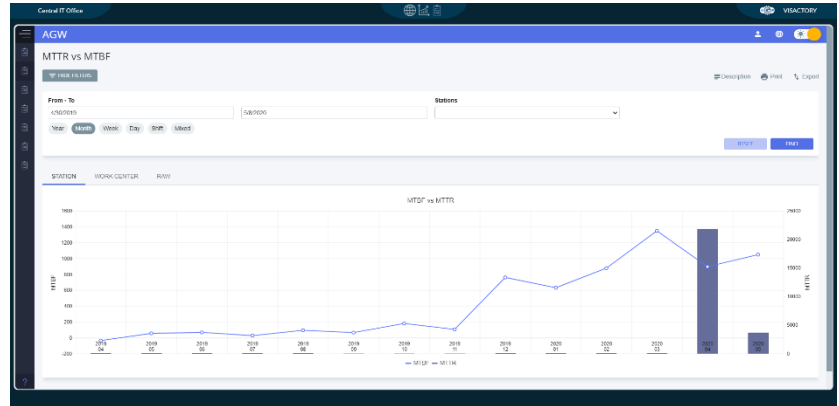
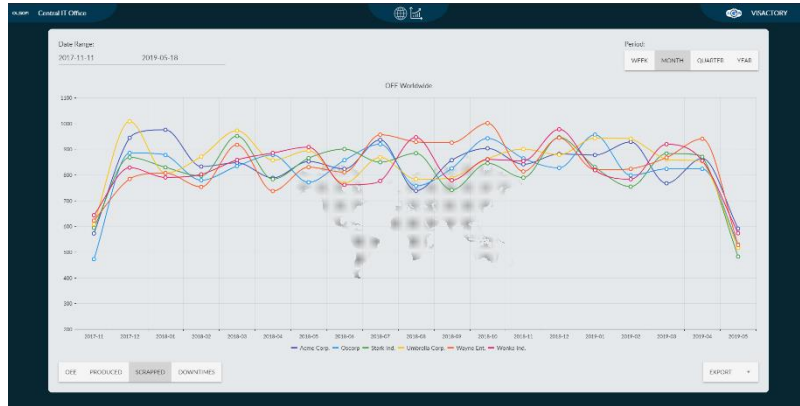
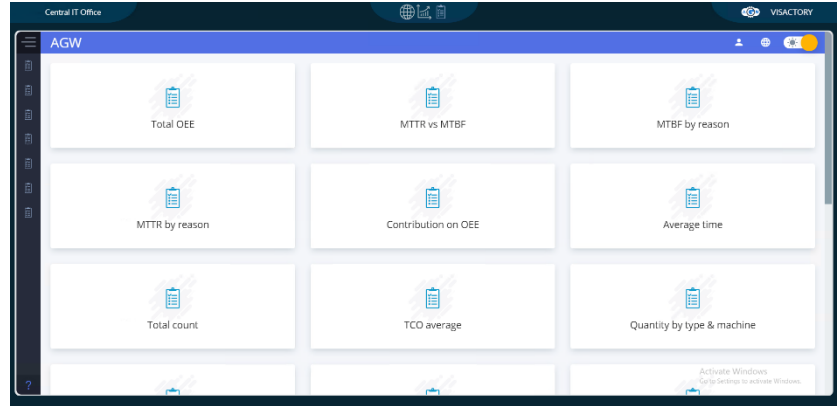
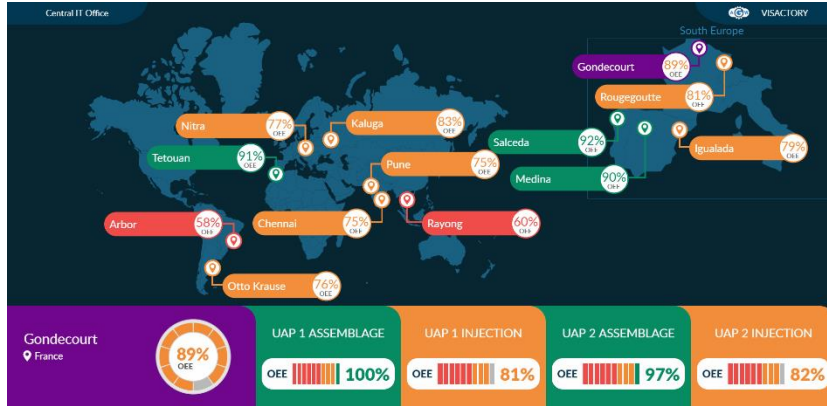
Fully configurable



Corporate Visualization And Analytics



OLSON
Merging Technologies





AGW MES - web platform for optimizing manufacturing operations. It is ISA95-compliant, flexible, and scalable. With AGW MES, you can manage an entire build process, providing your plant floor operators with exhausting instructions. What is more crucial, you can monitor their activity and plan implementation.

AGW MES is a comprehensive Manufacturing Execution System that can bring your manufacturing to a new level, regardless of business size and industry.



Features



OLSOM
Merging Technologies

Monitor your factory processes in real-time. View the critical production indicators on AGW MES Dashboards. Receive instant alert on manufacturing issues via email or paging messaging systems along with dashboard notifications.



Real-Time Visibility

Flexibility



Here at OLSOM, we understand how crucial solution customization is. Customize object properties and names, change UI layout, and perform many other changes without touching the code. Integrate AGW MES with other MES modules to build a holistic manufacturing ecosystem.

AGW MES is compatible with on-premises servers and cloud hosting. Select a suitable platform and access AGW MES via modern web browsers.



Web-Based Solution

Built-In Software Interfaces



With AGW MES interfaces, you can establish a robust communication between MES and your RFID, ERP systems, quality systems, and other manufacturing applications and technologies.

AGW MES exposes a brand range of customizable reports. You can order custom AGW report development from our system integration specialists or set up your reports with AGW Report Designer. Run your reports right in AGW UI or export data to MS Excell files.



Reporting System

Cross-Platform Software



Run MES HMI on PCs, tablets, and other mobile devices like barcode scanners your operators and forklift drivers use.



Production Scheduling

AGW MES exposes the interface for planning your production in advance, both manual and automated. You can select among numerous production scenarios, such as Build-To-Batch, Build-To-Schedule, Build-To-Sequence, or Build-To-Order scenario.



Product Labeling

Manage your label printing for production, containers, customers, and many others with AGW MES. Serialize your parts and containers.



Production Sequencing

AGW MES is integratable with numerous EDI formats. Upload your customer orders in EDIFACT, VDA, plain text, XML, and other formats. Use production scenarios like Build-To-Sequence or Pick-To-Sequence to plan the sequenced production with your production lines, subassemblies, and containers.



Traceability

We understand the vital importance of logging all production-related events. This is why AGW MES tracks and records every single event for your items, so you can always receive a history of item operations (what, where, when was done, and who performed the action).



Quality And Error Proofing

AGW MES eliminates the human factor by providing instructions and verifying operator actions. Moreover, the software product introduces defect management (defects reporting and analysis, scrap management).



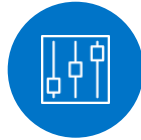
Downtime Management

AGW MES tracks production downtimes and provides you with insights into your equipment availability. Optimize the processes and minimize losses with AGW MES.



Order Management

Full-cycle customer order management made easy with AGW MES. Track every stage of customer order fulfillment: from raw materials posting to the order delivery. The software product automatically resolves and assigns your production jobs to customer orders.



Production Control

AGW MES enables you to divide the manufacturing process into separate stages, provide exhaustive operator instructions and monitor their execution.



Packaging And Dispatch

With AGW MES, you can select from different packaging models, whether batch or sequenced one. Organize accurate and timely customer order shipments and eliminate the human element with AGW MES.



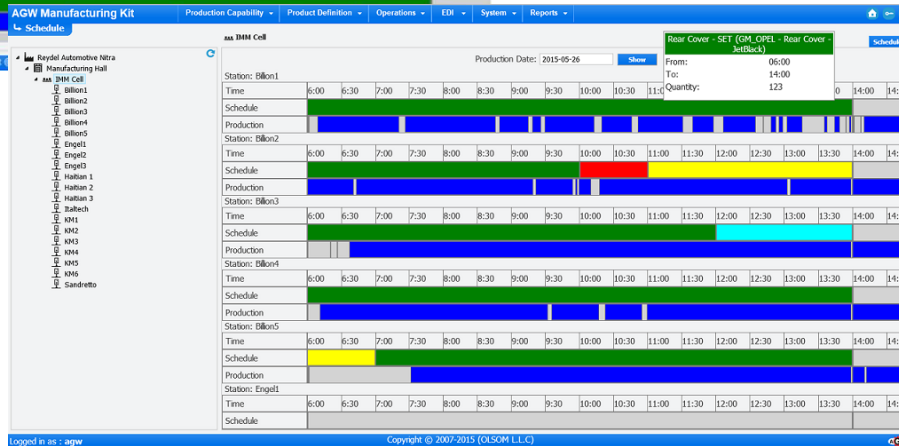
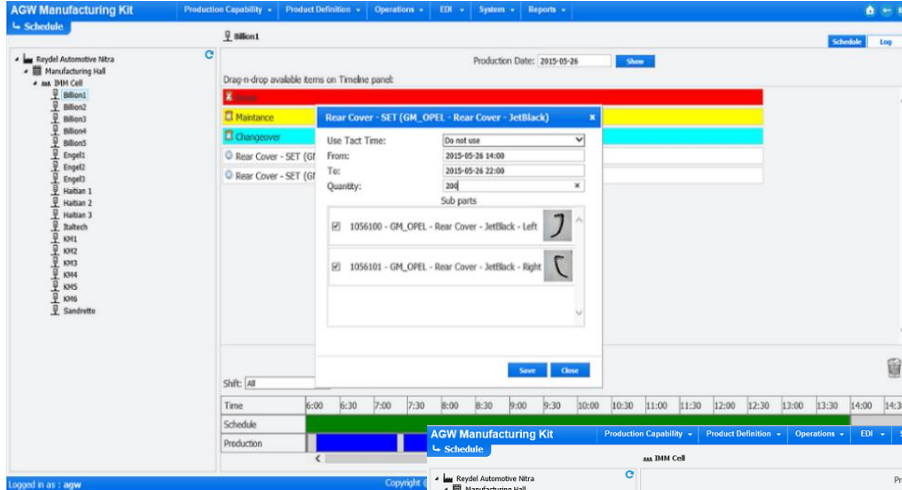
Labor Management

Manage operator activity, monitor their qualifications, organize operator training for specific equipment. AGW MES visualizes operator performance, so you can study and reduce personnel-related losses.

Real-Time Scheduling



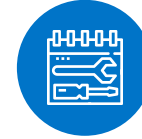
OLSOM
Merging Technologies



Tact time Respected during scheduling



Ability to schedule alternate resources



Scheduling of multi-cavity tools



Scheduling of breaks and maintenance



Capability of loading plan from ERP or Excel sheet

Labeling



OLSOM
Merging Technologies

ASSY 1 - Ned 2000
ComboBox001 | Part Component 001 | Part Component 002 | Part Component 003

6/25/2020 4:37 PM

Print

Container label

PartNo: Part Component 001, Part Component 002, Part Component 003, ComboBox001.
Part Description: 29, 30, 31, 28.
Slot qty: 8

Production label

PartNo: ComboBox001

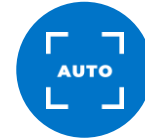
PartNo: Part Component 001

PartNo: Part Component 002

PRINT
FORCED PRINT
INCOMPLETE BACK



Product and packaging label printing



Auto and manual modes



Capability of reprint

Print container label

Part Component 001
Qty: 2 (max: 2)

Part Component 002
Qty: 1 (max: 2)

Part Component 003
Qty: 1 (max: 2)

ComboBox001
Qty: 1 (max: 2)

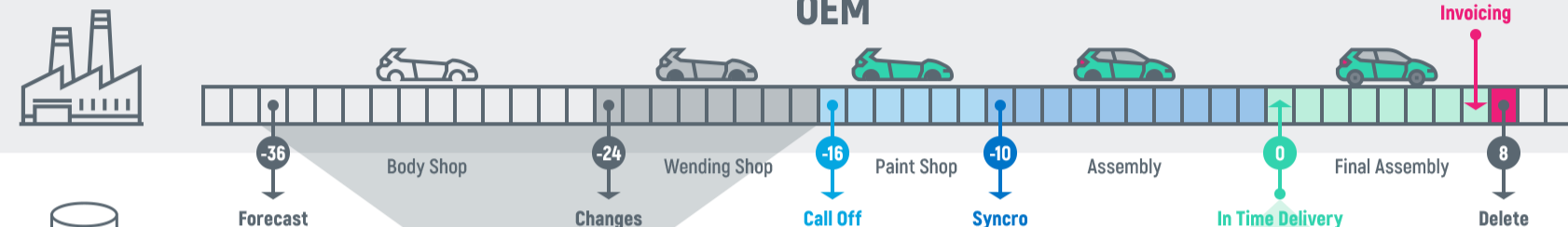
CONFIRM DECLINE

Red arrows point from the highlighted quantity fields to the main print screen above.

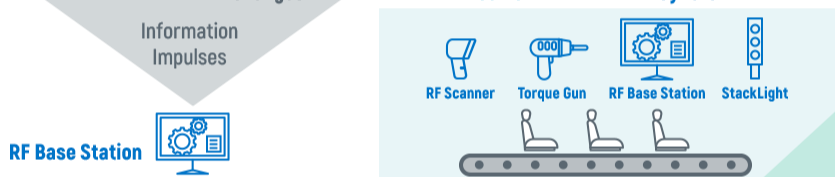
Sequencing



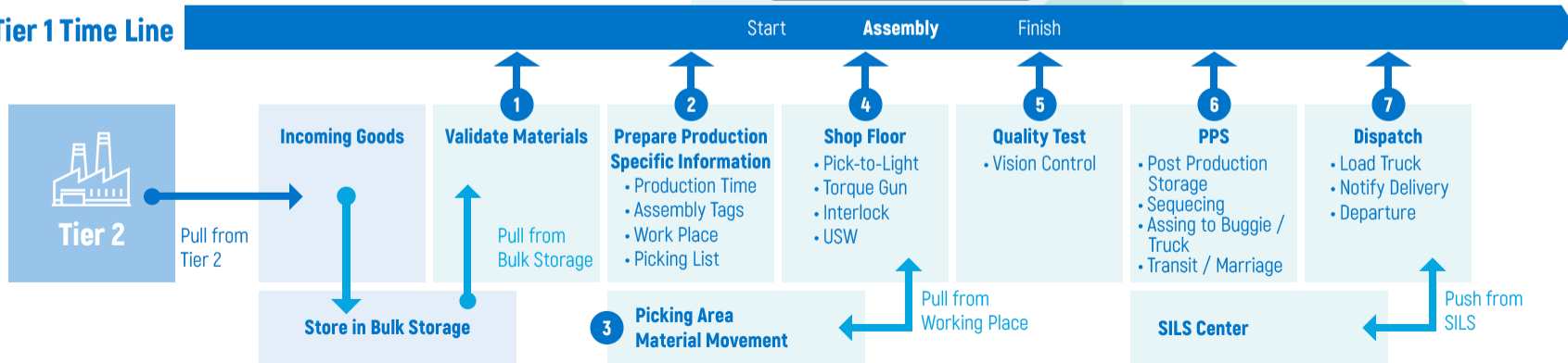
OLSOM
Merging Technologies



Error Proofing and Safety Data



Tier 1 Time Line





Traceability



Labeling

Identification of individual items, batches, containers, etc.
Serialization.
On-demand labeling.



Production Control

Robust routing of jobs and batches thru operations. Supply of build instructions to machinery and personnel.



Batch Traceability

Isolation of batches with production defect.
Avoid value add with defect batches.



Error Proofing

Provide poka-yoke between operations as well as between individual step of an operation. Avoid value add to items isolated due to quality.



Item Traceability

Trace birth history and genealogy of certain item.
Isolate items with defects avoiding value add.



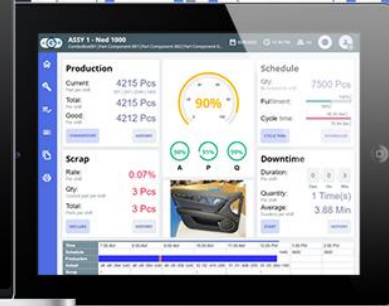
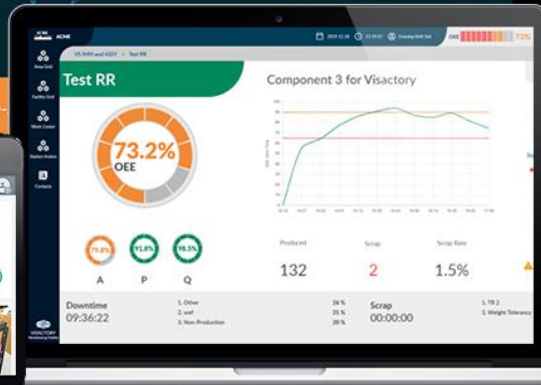
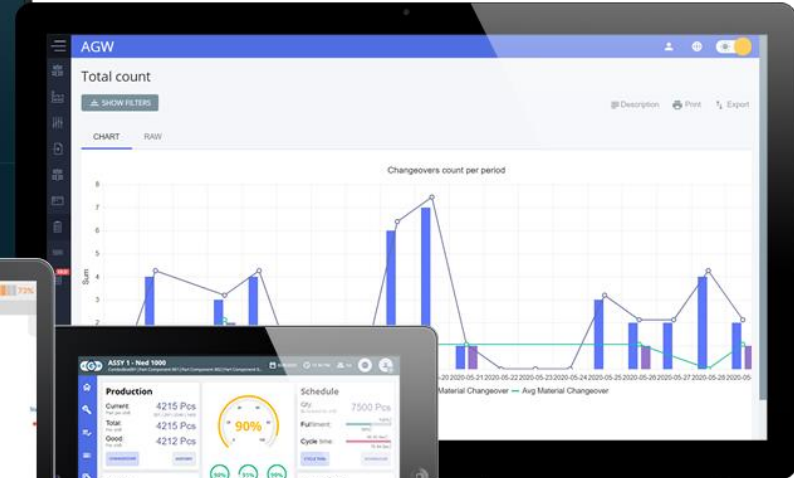
Process Traceability

Analysis of process parameters in time.
Isolate defective conditions SPS.

Instant Visibility



OLSON
Merging Technologies



Advanced Analytics



OLSOM
Merging Technologies



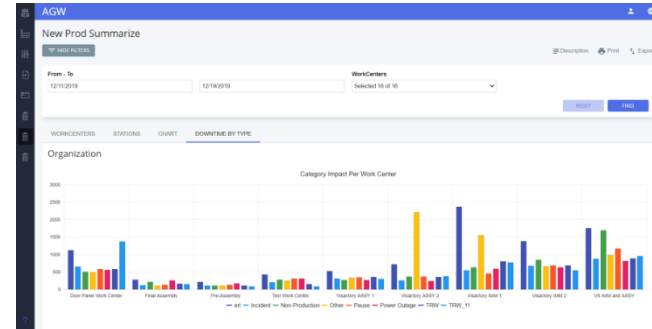
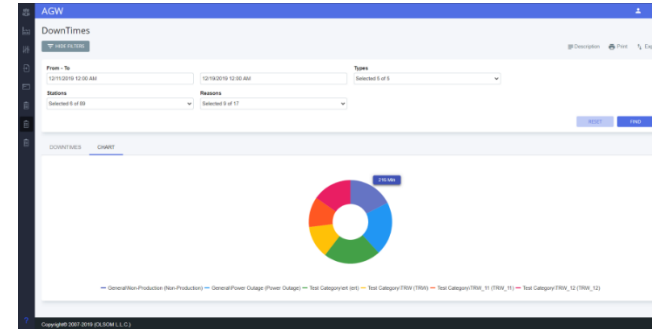
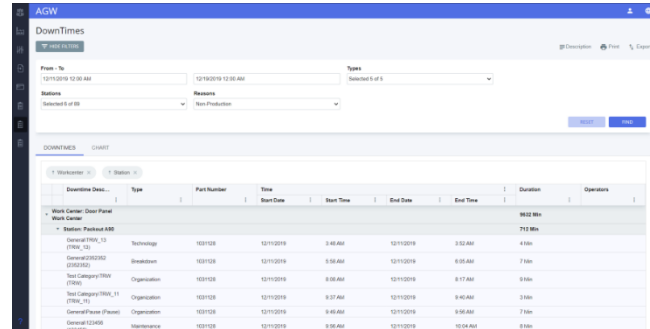
In-built data historian



Dozens of categorized standard table and chart reports



Integration with Microsoft SSRS and Sharepoint





AGW WMS is a sophisticated software product for your inventory visibility. It enables you to monitor and optimize your inventory item movement: from the posting to the time when finished products leave your facility.

AGW WMS provides up-to-the-minute information on the inventory item quantity, location, status, and event history, whether it's raw materials, work-in-progress product, or the finished one.



Features



OLSOM
Merging Technologies

Real-time Visibility

Monitor your factory processes in real-time. View the critical production indicators on AGW WMS Dashboards. Receive instant alerts on manufacturing issues via email or paging messaging systems along with dashboard notifications.

Web-based Solution

AGW WMS is compatible with on-premises servers and cloud hosting. Select a suitable platform and access AGW WMS via modern web browsers.

Reporting System

AGW WMS exposes a broad range of customizable reports. You can order custom AGW report development from our system integration specialists or set up your reports with AGW Report Designer. Run your reports right in AGW UI or export data to MS Excel files.

Flexibility

Here at OLSOM, we understand how crucial solution customization is. This is why we made AGW WMS core configurable. Customize object properties and names, change UI layout, and perform many other changes without touching the code. Integrate AGW WMS with other MES modules to build a holistic manufacturing ecosystem.

Built-in Software Interfaces

With AGW WMS interfaces, you can establish a robust communication between WMS and your RFID, ERP systems, quality systems, and other manufacturing applications and technologies.

Cross-platform Software

Run WMS HMI on PCs, tablets, and other mobile devices like barcode scanners your operators and forklift drivers use.

Functions



OLSOM
Merging Technologies



Tracking And Tracing

With AGW WMS, you can track your items on every stage of the manufacturing process. Monitor your inventory by WIP status, serial numbers, SKU attributes, and locations. Set the minimum/maximum stock balance to receive notifications when the actual stock reaches the limit. Moreover, AGW WMS provides a comprehensive reporting system for your inventory history/activity.



Posting

Posting inventory items on a part, container, or pallet level made easy with AGW WMS. The system automatically gathers posting data (shipment number, trailer number, pallet/container/SKU numbers, quantities, attributes, etc) for further tracking and tracing. Manage the incoming product routing to a specific stock location with AGW WMS.



Stock Replenishment

Replenish your inventory stock conveniently with AGW WMS. Just scan the barcode of part, container, or pallet, enter a location, and the system will record your stock replenishment. AGW WMS also shows operators the location of the needed inventory item and where they can transfer it to.



Shipping

Manage your shipment processes and monitor the loading of pallets and containers to trucks. AGW WMS supports both sequenced and batch shipments.



Selecting Items For Production

Integrate AGW WMS with AGW MES to schedule the inventory items use. Just scan a part number or a serial number of items to confirm the scheduling. AGW WMS supports FIFO, LIFO, FEFO selection algorithms. Monitor your item packing (into containers and pallets) with the packing model you need (chaos, batch, sequenced).



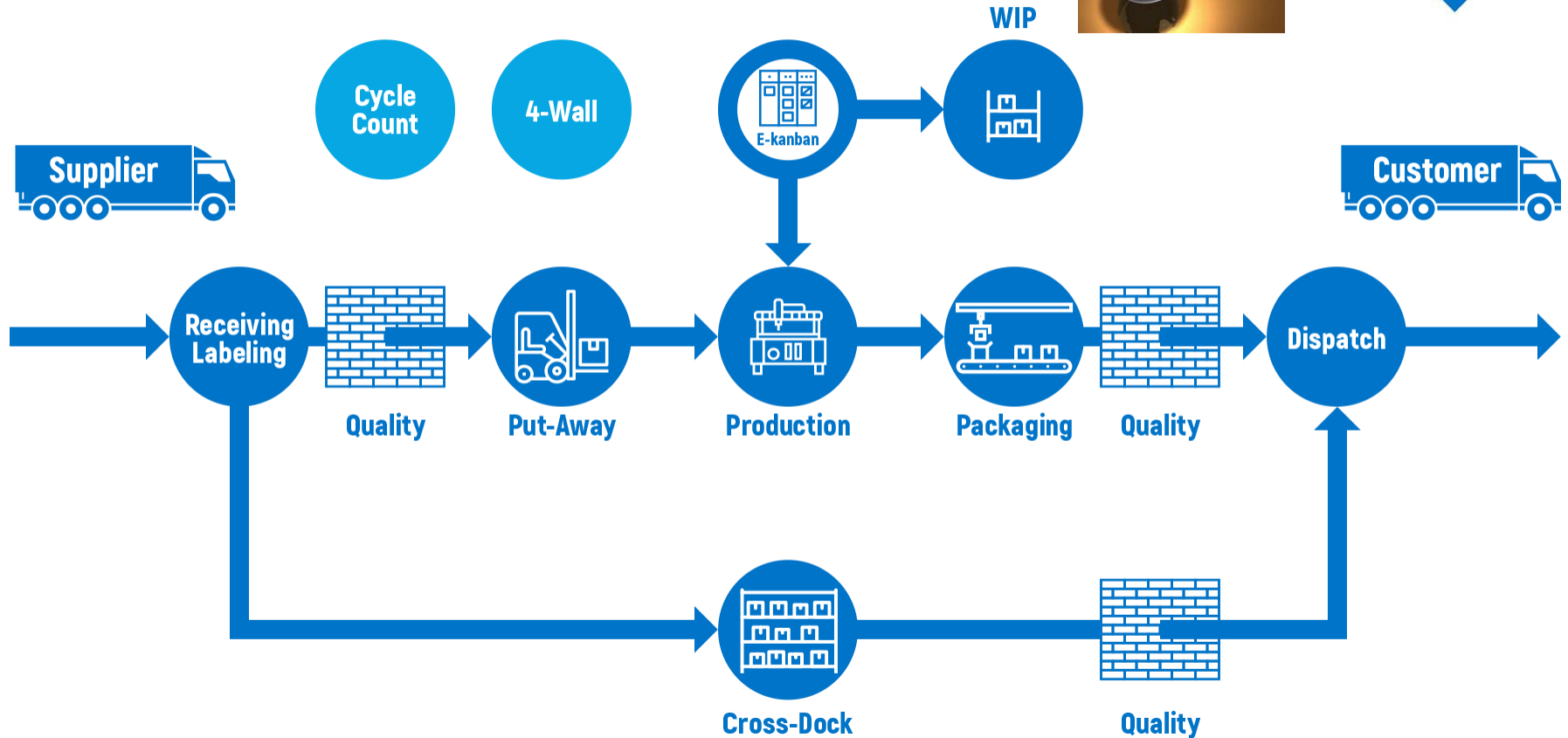
Stock Adjustments

Correct your stock balance on the location level and split your inventory items on the pallet or part level.

Inventory Management



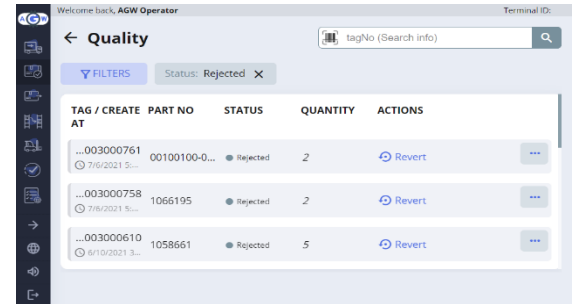
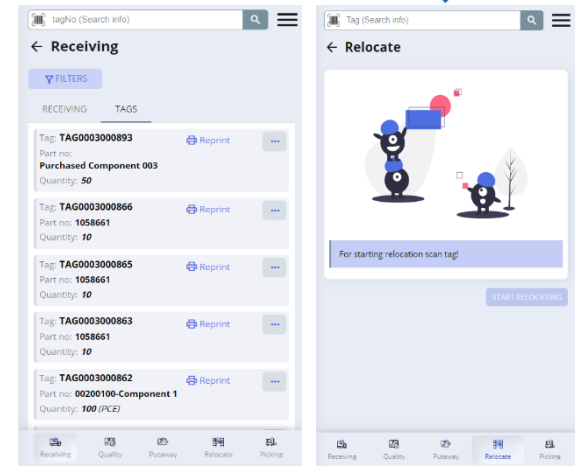
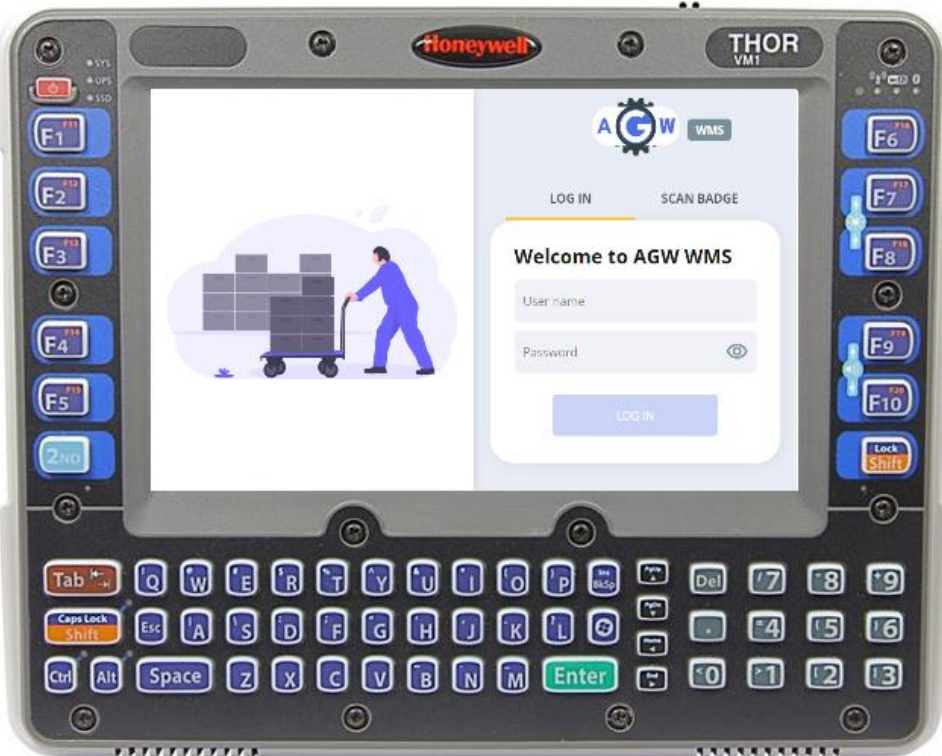
OLSOM
Merging Technologies



Inventory Management



OLSON
Merging Technologies



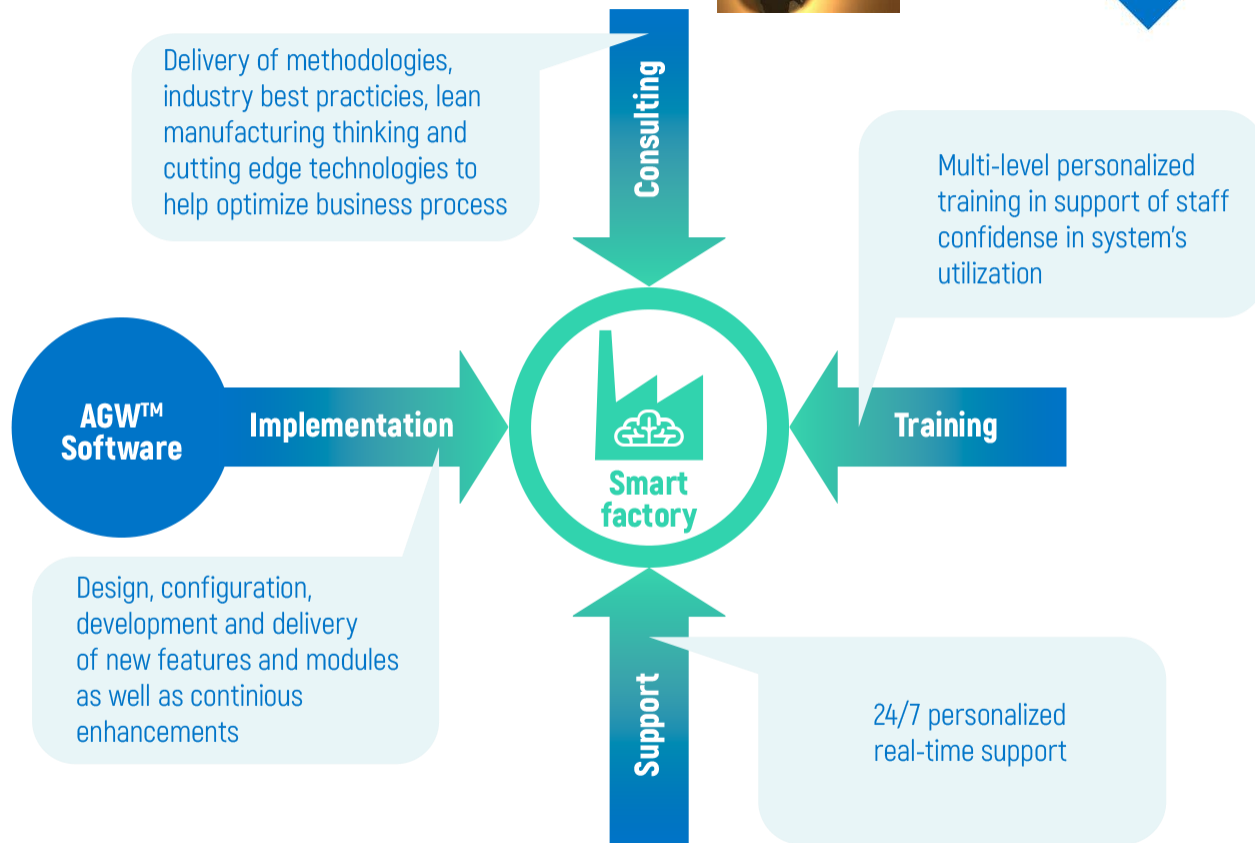
How Do We Work?



OLSOM
Merging Technologies

OLSOM is a RELIABLE PARTNER in transition of your enterprise to INDUSTRY 4.0

Investing in Industry 4.0 solutions, with small one-off expenditures, gives the company an immediate cost reduction while ensuring a long-term increase in the profitability of production.





Consulting

We offer technology consulting services for building manufacturing excellence strategies. Here's how we achieve this:

- Year of experience. OLSOM has been delivering reliable and scalable software solutions since 2009;
- Best practices. Our IT-consultants utilize best practices for improving your business processes;
- Lean manufacturing thinking. OLSOM consulting experts trim the fat off your manufacturing;
- Profound knowledge of manufacturing IT-technologies. We know the right tools for enhancing your industrial processes.



System Integration

OLSOM offers a set of services for integrating of AGW-related software solutions. Our integration team will install and integrate the software you need.



Support

OLSOM provides customers with 24/7 technical support in real-time. Our support specialists identify the core of an issue and fix the problem in minutes.

We also introduce a toolset for regular system health checks and software performance monitoring. Lean towards OLSOM support services, detect and eliminate threats before they start impacting your business processes.

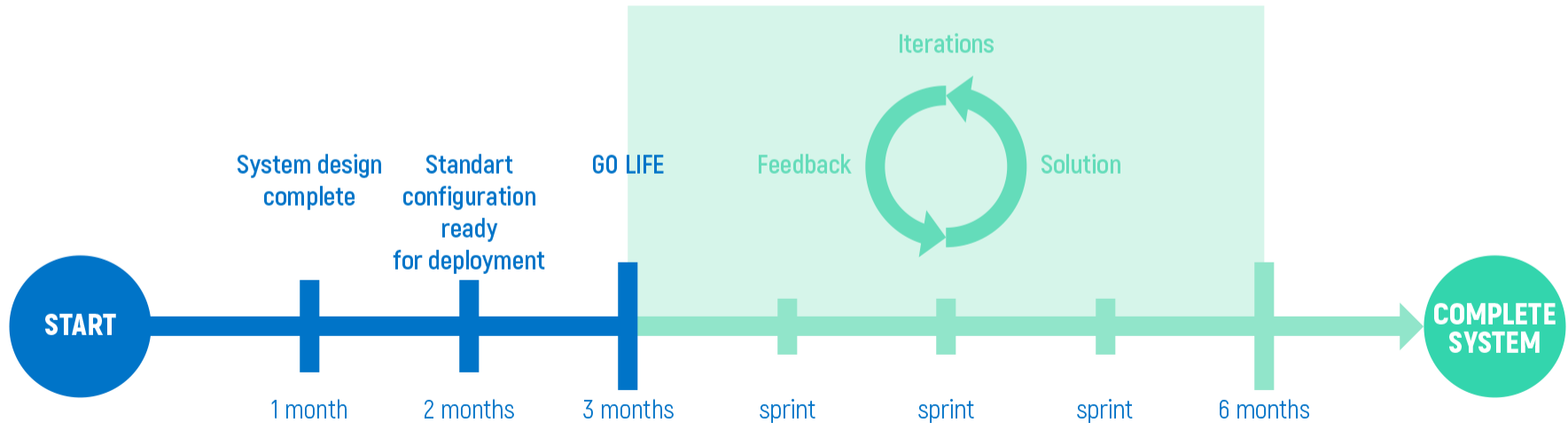


Training

OLSOM offers several levels of training programs for customers and partners. Each level addresses the specific industrial needs and target audience.



SCRUM - secures continious contact with the client aimed to tailor solution satisfying very personal client needs





Thank You!

For details please contact:

Byron Blackburn

Phone: 217-520-3060

Email: byron@blackburnglobal.com

Steve Hanson

Phone: 248-752-1981

Email:

S.Hanson@Blackburnglobal.com



OLSOM
Merging Technologies